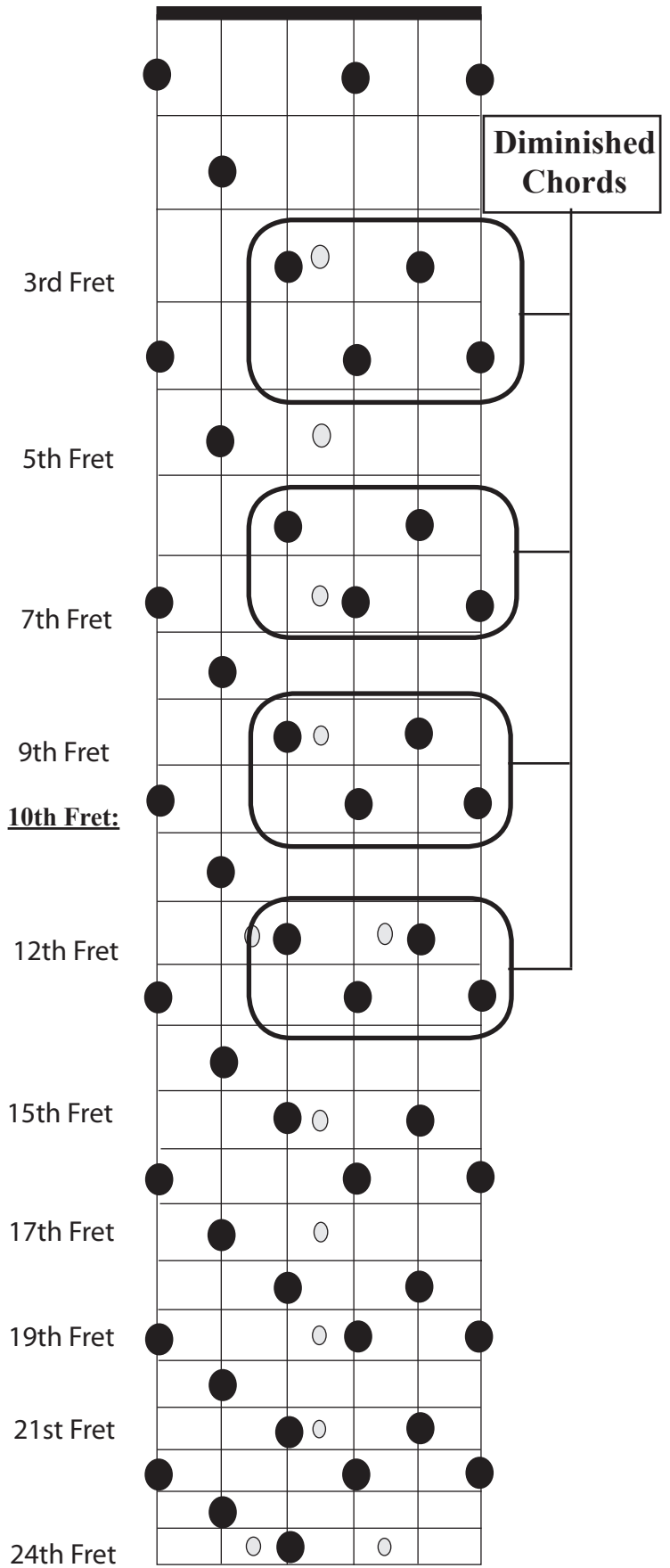
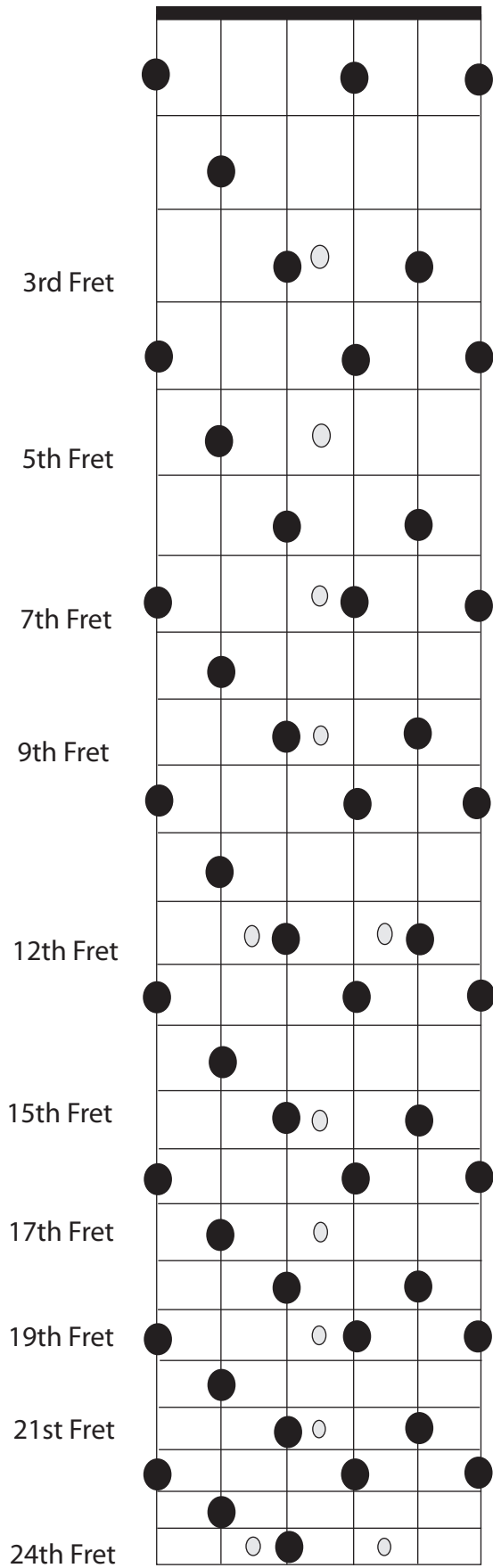
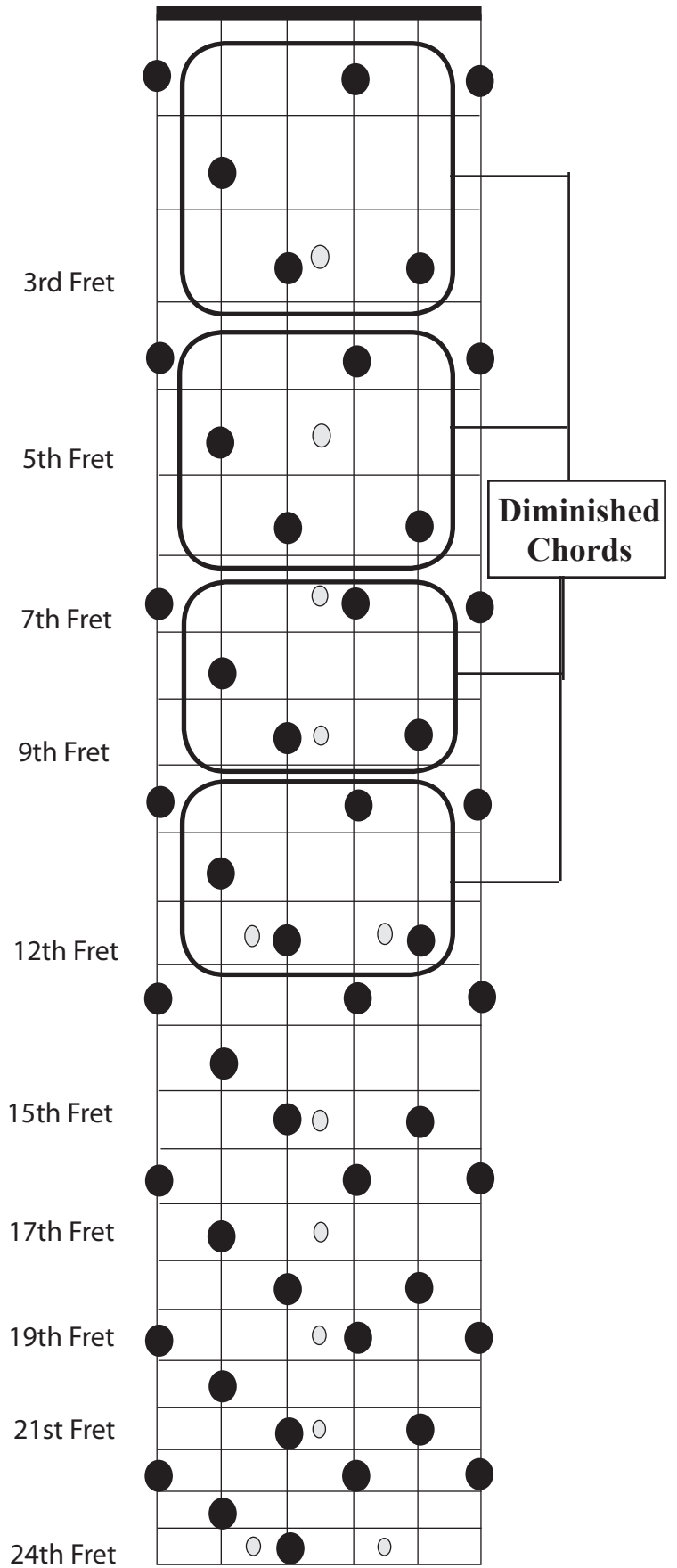
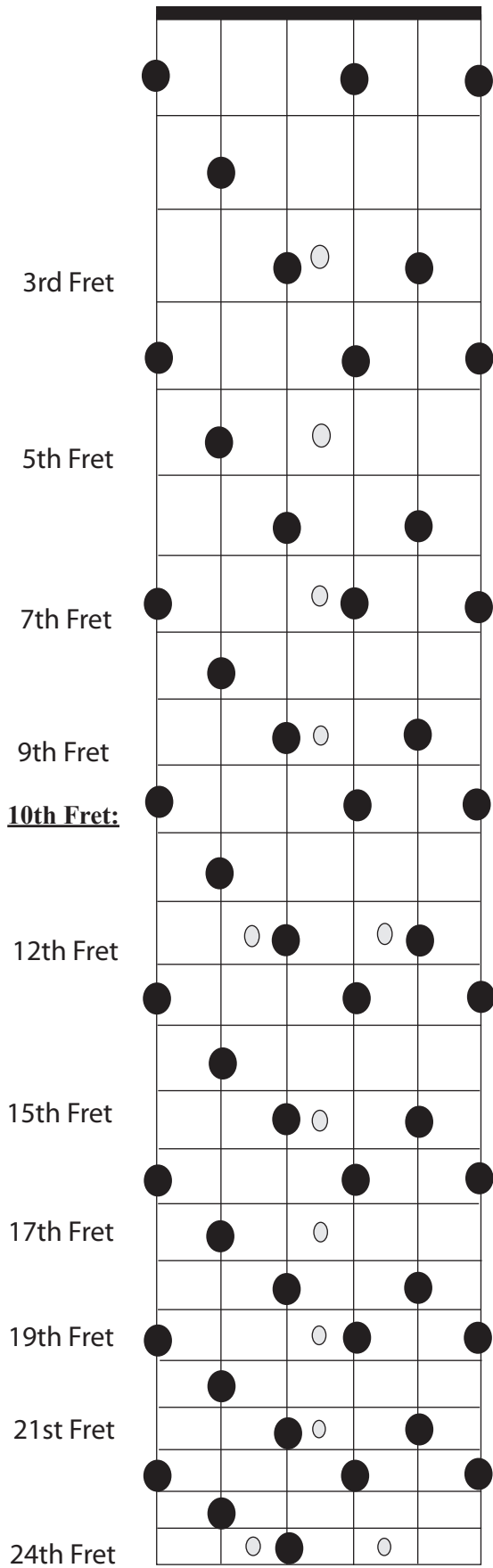


Diminished Scale (mi 3rd intervals) - Page 1



Diminished Scale (mi 3rd intervals) - Page 2



Diminished Scale (mi 3rd intervals) - Page 3

The diagram illustrates the diminished scale (mi 3rd intervals) across two fretboards. The left fretboard shows the full scale from the 3rd to the 24th fret. The right fretboard highlights four diminished chords, each spanning two frets and four frets. A box labeled "Diminished Chords" points to the 3rd fret chord.

Diminished Chords:

- 3rd Fret
- 5th Fret
- 7th Fret
- 9th Fret
- 12th Fret
- 15th Fret
- 17th Fret
- 19th Fret
- 21st Fret
- 24th Fret

Diminished Scale (mi 3rd intervals) - Page 4

The image displays two guitar fretboard diagrams for the diminished scale with minor 3rd intervals. The left diagram shows the full scale from the 3rd to the 24th fret. The right diagram highlights four specific diminished chords, each spanning two frets and four strings (strings 2, 3, 4, and 5).

Diminished Chords:

- 3rd Fret:** Notes on strings 2, 3, 4, 5 are G3, A3, B3, C4.
- 5th Fret:** Notes on strings 2, 3, 4, 5 are B3, C4, D4, E4.
- 7th Fret:** Notes on strings 2, 3, 4, 5 are C4, D4, E4, F4.
- 12th Fret:** Notes on strings 2, 3, 4, 5 are F4, G4, A4, B4.

The full scale sequence (3rd to 24th fret) is: G3, A3, B3, C4, D4, E4, F4, G4, A4, B4, C5, D5, E5, F5, G5, A5, B5, C6, D6, E6, F6, G6, A6, B6, C7.

Diminished Scale (mi 3rd intervals) - Page 5

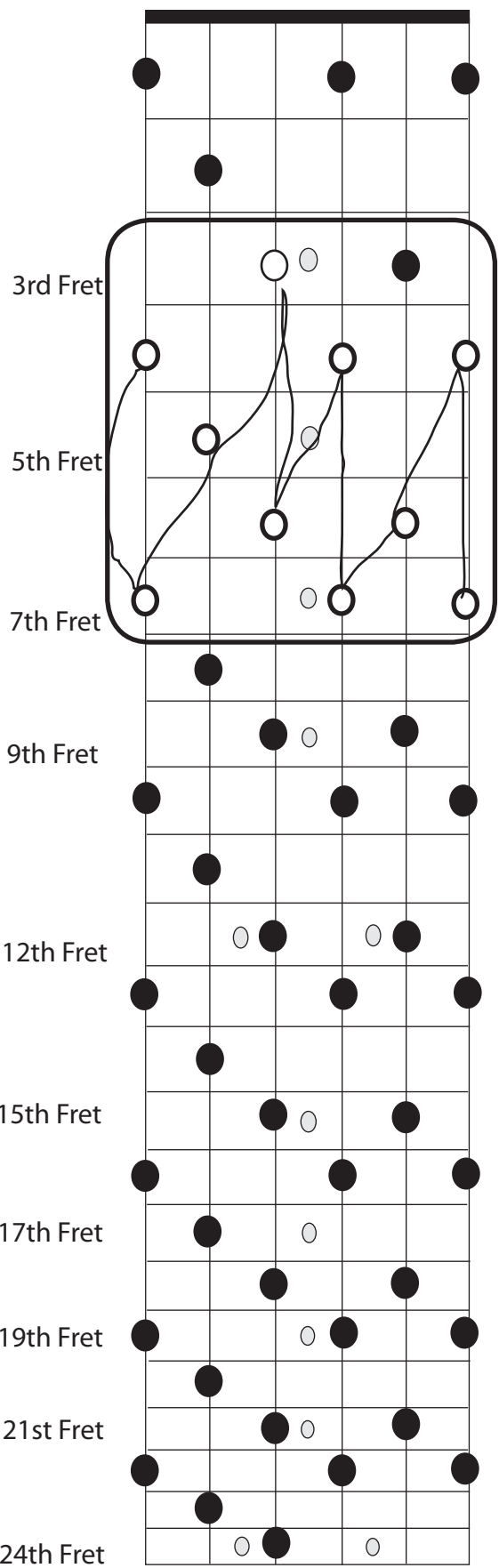
Diminished Scale

The diagram illustrates the Diminished Scale (mi 3rd intervals) across the fretboard from the 3rd fret to the 24th fret. The scale is shown in two parts: a static representation of notes and a dynamic representation with a melodic line.

Static Representation (Left): Shows the notes of the scale as black dots on a fretboard grid. The notes are located at the following frets and strings: 3rd fret (1st string), 5th fret (2nd string), 7th fret (3rd string), 9th fret (4th string), 12th fret (5th string), 15th fret (6th string), 17th fret (5th string), 19th fret (4th string), 21st fret (3rd string), and 24th fret (2nd string). Open circles represent natural harmonics at the 3rd, 5th, 7th, 9th, 12th, 15th, 17th, 19th, 21st, and 24th frets.

Melodic Line (Right): Shows the same notes with a line connecting them in a descending sequence, illustrating the scale's movement. The line starts at the 3rd fret (1st string) and moves down to the 24th fret (2nd string), following the sequence of notes: 3rd fret (1st string), 5th fret (2nd string), 7th fret (3rd string), 9th fret (4th string), 12th fret (5th string), 15th fret (6th string), 17th fret (5th string), 19th fret (4th string), 21st fret (3rd string), and 24th fret (2nd string).

Diminished Scale (mi 3rd intervals) - Page 6



Diminished Scales

